

# YOUR CABINET SOLUTION FOR THE MULTIFAMILY MARKET



**CONTRACTOR'S**  
CHOICE®

**MasterBrand**  
Cabinets, Inc.



CLARKSON BIRCH ROUGE

## COME HOME TO MASTERBRAND

MasterBrand Cabinets is the second largest cabinet manufacturer in North America, part of the \$7.6 billion Fortune Brands company. Founded in 1954 as United Cabinet Company, today we manufacture and distribute over a dozen major cabinet brands nationwide – including Contractor's Choice – through a network of over 20 plants and distribution centers. With over 9,000 associates we service the redevelopment and new construction segments with the highest quality products, delivered on time and complete, at fair prices.

MasterBrand Cabinets is part of the Kitchen Cabinet Manufacturers Association (KCMA) and the National Kitchen and Bath Association (NKBA). Contractor's Choice cabinetry carries the ANSI/KCMA A161.1 quality assurance certification and meets the requirements set forth in section 12370 of the HUD GUIDE SPECIFICATIONS for PUBLIC AND INDIAN HOUSING (Sept. 1993) normal/elderly use.



**CONTRACTOR'S**  
CHOICE®

# QUALITY MADE AFFORDABLE.

For good-looking, long-lasting cabinets that easily fit within your budget, there's only one choice. Contractor's Choice cabinetry has it all — quality craftsmanship, appealing design and most importantly, affordability. Plus, every inch is backed by a 1-year warranty from MasterBrand, one of the most respected names and largest service networks in the cabinet industry. The choice is easy. Take a closer look at Contractor's Choice today.



MasterBrand Cabinets' sound environmental management and sustainable manufacturing practices have been approved by the Kitchen Cabinet Manufacturers Association to meet the requirements of the KCMA Environmental Stewardship Program ESP (Jan. 2006)

Contractor's Choice cabinetry complies/will comply with Phase I and Phase II emissions standards of the California Air Resources (CARB) Airborne Toxic Control Measure (ATCM) - Title 17. California Code of Regulations Section 93120.

Contractor's Choice cabinetry is also eligible for points as a KCMA ESP 01 qualifying product according to the NAHB Green Building Standard (ICC 700-2008) in section 901.10 Cabinets.

# VALUE YOU CAN DEPEND ON.

Contractor's Choice cabinets are built solid to hold up to the rigors of multi-family living. We know our handiwork will be put to the test. So we put more into them, from manufacture through final install. Rest assured, our cabinets—and guarantee—hold their own.



NEWBERRY BIRCH AUTUMN

## ALBANY

birch | fawn finish

- Standard construction (13W - autumn, 13X - fawn, 13Y - rouge, 13Z - sarsaparilla)

All Plywood construction (14W - autumn, 14X - fawn, 14Y - rouge, 14Z - sarsaparilla)

- Shaker door with a recessed veneer center panel
- Full overlay
- Slab drawer front



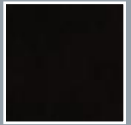
autumn



fawn



rouge



sarsaparilla



## MALTA

birch | rouge finish

- Standard construction (13R - autumn, 13S - fawn, 13T - rouge, 13U - sarsaparilla)

All Plywood construction (14R - autumn, 14S - fawn, 14T - rouge, 14U - sarsaparilla)

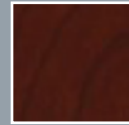
- Full overlay
- Veneered slab door and drawer front



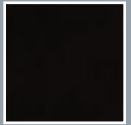
autumn



fawn



rouge



sarsaparilla





## CLARKSON

birch | rouge finish

- Standard construction (13K - autumn, 13L - fawn, 13M - rouge, 13N - sarsaparilla)

All Plywood construction (14K - autumn, 14L - fawn, 14M - rouge, 14N - sarsaparilla)

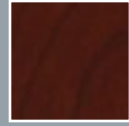
- Veneered raised center panel door
- Partial overlay
- Beveled profile on the inside and outside of door and drawer fronts



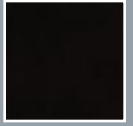
autumn



fawn



rouge



sarsaparilla



## NEWBERRY

birch | autumn finish

- Standard construction (13F - autumn, 13G - fawn, 13J - rouge, 13P - sarsaparilla)

All Plywood construction (14F - autumn, 14G - fawn, 14J - rouge, 14P - sarsaparilla)

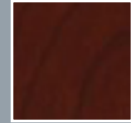
- Veneered recessed center panel door
- Partial overlay
- Beveled profile on the inside and outside of door frames and drawer fronts



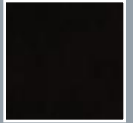
autumn



fawn



rouge



sarsaparilla



## HAMMOND

oak | wheat finish

- Standard construction (13B - wheat)  
All Plywood construction (14B - wheat)
- Veneered recessed center panel door
- Partial overlay
- Beveled profile on the inside and outside of door and drawer fronts



wheat





**STAFFORD**  
oak | wheat finish

- Standard construction (13D - wheat)
- All Plywood construction (14D - wheat)
- Veneered raised center panel door
- Partial overlay
- Beveled profile on inside and outside of door frames and drawer fronts



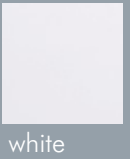
wheat



## BARTLETT

thermofoil | white

- Standard construction (13E - white)
- All Plywood construction (14E - white)
- Thermofoil heat-formed and glued over a 5/8" MDF core to create a tough, durable surface
- Partial overlay
- Raised center panel profile with beveled edges on the outside of the door frame and drawer fronts



white



# STANDARD CONSTRUCTION

## WALL CABINETS



- 1/2" furniture board top.
- 1/2" furniture board adjustable shelves (15 lbs. maximum weight/sq.ft.).
- 3/4" x 1 1/2" solid wood face frame.
- 3/8" furniture board sides and back.
- 1/2" furniture board bottom.
- Cabinet interior features natural maple laminate. (Bartlett features white laminate.)
- Fully concealed self-closing, adjustable steel hinges.

## BASE CABINETS



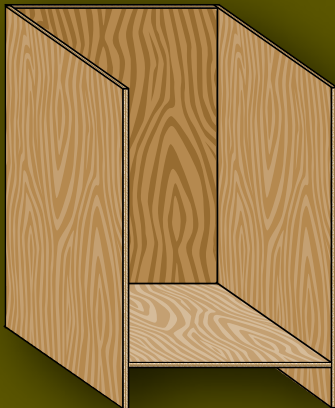
- Four furniture board corner braces.
- 3/8" furniture board back.
- 3/4" x 1 1/2" solid wood face frame with 3" center stile.
- 1/2" half-depth furniture board shelf.
- 3/8" furniture board bottom and sides.
- 3/8" x 4" high furniture board recessed toekick (recessed 3 3/8" deep).  
Recessed toekick is unfinished furniture board and requires toekick cover.
- Cabinet interior features natural maple laminate. (Bartlett features white laminate.)
- Fully concealed self-closing, adjustable steel hinges.

## DRAWERS



- Furniture board drawer with 1/2" sides and back and 3/8" bottom.
- 20" deep drawer box with stapled butt joint construction.
- Drawer bottom stapled into sides, front and back.
- Self-closing, epoxy-coated guides for smooth, quiet action. (Rated at 100 lbs. capacity per drawer.)
- Adjustable side-mount drawer guides with double rails for more stability.
- Built-in drawer stop.

# ALL-PLYWOOD CONSTRUCTION



3/8" Laminated Plywood Sides

1/2" Laminated Plywood Shelves

## WALL CABINETS



- 1/2" plywood top and bottom
- 1/2" plywood adjustable shelves (15 lbs. maximum weight/sq.ft.)
- 3/4" x 1 1/2" solid wood face frame
- 3/8" plywood sides and back
- Cabinet interior features natural maple laminate (Bartlett thermofoil features white laminate.)
- Fully concealed self-closing, adjustable steel hinges

## BASE CABINETS



- Two plywood stretcher rails
- 3/8" plywood back, bottom and sides
- 3/4" x 1 1/2" solid wood face frame with 3" center stile
- 1/2" half-depth plywood shelf
- 3/8" x 4" high plywood recessed toekick (recessed 3 3/8" deep)  
Recessed toekick is unfinished plywood and requires toekick cover.
- Cabinet interior features natural maple laminate (Bartlett features white laminate.)
- Fully concealed self-closing, adjustable steel hinges

## DRAWERS

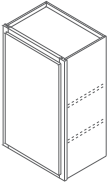


- All wood drawer with 1/2" sides and back and 3/8" bottom
- All styles feature natural wood finish
- 20" deep drawer box with stapled butt joint construction
- Drawer bottom stapled into sides, front and back
- Self-closing, epoxy-coated guides for smooth, quiet action (Rated at 100lbs. capacity per drawer.)
- Adjustable side-mount drawer guides with double rails for more stability
- Built-in drawer stop

# WALL CABINETS

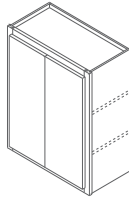
NOTE: Cabinet configurations may vary by size and door style. Contractor's Choice reserves the right to alter design, specifications and material without obligation to make similar changes to products previously manufactured.

## SINGLE DOOR 14", 18", 24", 30", 36" & 42" High, 12" Deep



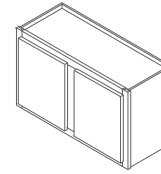
W2114 W0930 W1236 W1542  
 W2414 W1230 W1536 W1842  
 W2118 W1530 W1836 W2142  
 W2418 W1830 W2136 W2442  
 W2124 W2130 W2436  
 W2424 W2430 W1242

## DOUBLE DOOR 30", 36" & 42" High 12" Deep



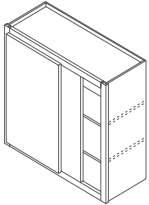
W2730 W4830 W3042  
 W3030 W2736 W3342  
 W3330 W3036 W3642  
 W3630 W3336  
 W3930 W3636  
 W4230 W2742

## DOUBLE DOOR 12", 14", 18" & 24" High, 12" Deep



W3012 W3018 W3324  
 W3612 W3318 W3624  
 W3014 W3618 W3924  
 W3314 W3918 W4224  
 W3614 W4218  
 W3914 W3024

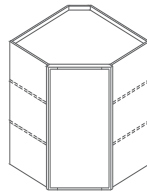
## SQUARE CORNER 24", 30", 36" & 42" High



SC3024 SC4230\* SC2442  
 SC3624 SC4830\* SC3042  
 SC2430 SC2436 SC3642  
 SC3030 SC3036  
 SC3630 SC3636

\* Double Door

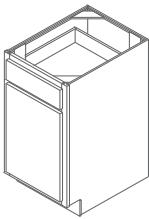
## DIAGONAL CORNER 24", 30", 36" & 42" High



DC2424  
 DC2430  
 DC2436  
 DC2442

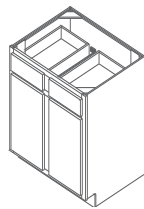
# BASE & TALL CABINETS

## SINGLE DOOR 35" High, 23 3/4" Deep



B09 B21  
 B12 B24  
 B15  
 B18

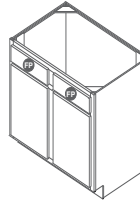
## DOUBLE DOOR 35" High, 23 3/4" Deep



B27\* B39  
 B30 B42  
 B33 B45  
 B36 B48

\* Single Drawer

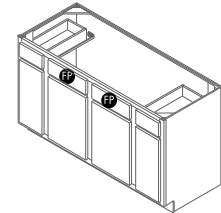
## SINK BASE 35" High, 23 3/4" Deep



SB24\* SB39  
 SB27 ^ SB42  
 SB30 SB48  
 SB33  
 SB36

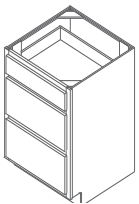
\* Single Door/Drawer Front  
 ^ Single Drawer Front

## SINK BASE 35" High, 23 3/4" Deep



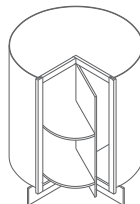
SB60

## THREE DRAWER 35" High, 23 3/4" Deep



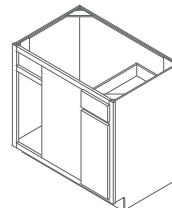
DB12  
 DB15  
 DB18  
 DB24

## SQUARE CORNER ROTO 35" High



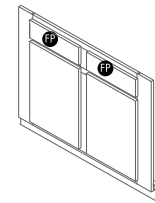
SCR36

## SQUARE CORNER 35" High, 23 3/4" Deep



SCB36  
 SCB42  
 SCB48

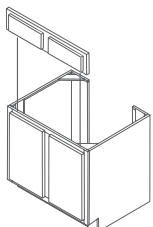
## SINK FRONT 35" High



SF30\*  
 SF36  
 SFC36\*

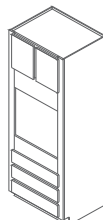
\* Single Door

## REMOVABLE SINK BASE WITH FRONT PANEL 23 3/4" Deep



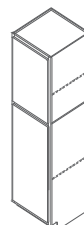
RSB30  
 RSB36

## OVEN CABINET 84", 90" & 96" High, 30" Wide



OC33  
 OC3390  
 OC3396

## UTILITY CABINET 84", 90" & 96" High

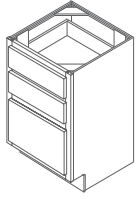


U18 L or R  
 U1890 L or R  
 U1896 L or R  
 U24 L or R  
 U2490 L or R  
 U2496 L or R

# VANITY CABINETS

## VANITY DRAWER BASE

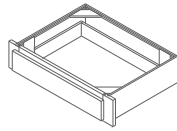
30" High, 21" Deep



VDB12  
VDB15  
VDB18

## VANITY DRAWER

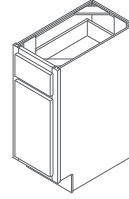
30" Wide, 21" Deep trimmable 3"



VDT30

## VANITY BASE

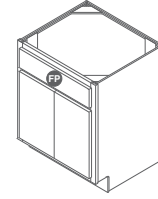
30" High, 21" Deep



VB12  
VB15

## VANITY SINK BASE

30" High, 21" Deep

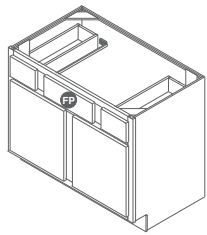


VSB24 VSB30\*  
VSB27 VSB33\*

\* Two False Drawer Fronts

## VANITY SINK BASE

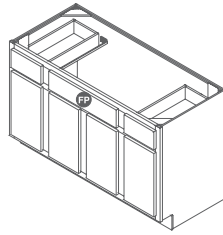
30" High, 21" Deep



VSB36  
VSB42

## VANITY SINK BASE

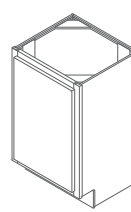
30" High, 21" Deep



VSB48

## VANITY SINK BASE

30" High, 16" Deep



VSB1816

# ACCESSORIES

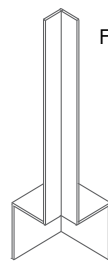
## FILLERS 3", 6" Wide



F330  
F331  
F342  
F380  
F392  
F631  
F642  
F692

F324UD

## CORNER FILLERS



FBC3X3UD

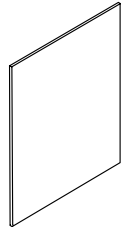
## PANELS

P4836  
PA4836  
P4896  
PA4896  
PP9635  
PEPR335  
PEPRPLY335  
PSFEP  
PSFEPPPLY



## VENEER END PANELS

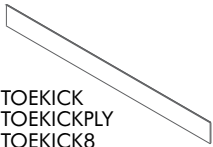
Sold in pairs  
EP1130  
EP1142  
EP2335  
EP2384  
EP2396



## LAMINATE END PANELS

EPA1130  
EPA1142  
EPA2335  
EPA2384  
EPA2396

## TOEKICKS



TOEKICK  
TOEKICKPLY  
TOEKICK8  
TOEKICKPLY8

TOEKICKUD  
TOEKICK8UD  
TOEKICKPLYUD  
TOEKICKPLY8UD  
TKC



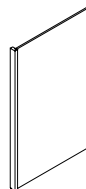
## VANITY TAPERED END PANEL

VTEP



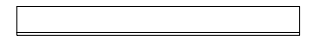
## END PANEL WITH 1 1/2" WIDE STILE ATTACHED

PEPR1.535  
PEPRPLY1.535



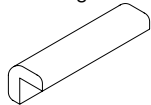
## STRAIGHT VALANCE 5" High

V549ST  
V573ST



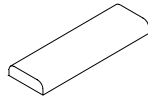
## OUTSIDE CORNER MOULDING 8' Long

MOCW8



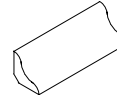
## BATTEN MOULDING 8' Long

MBAT8



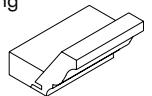
## COVE MOULDING 8' Long

MCV8



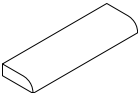
## FULL OVERLAY CROWN MOULDING 8' Long

MFOLCR8



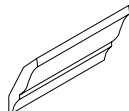
## SCRIBE WOOD MOULDING 8' Long

MSW8



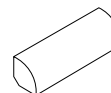
## CROWN MOULDING 8' Long

MCROWN8



## QUARTER ROUND MOULDING 8' Long

MQR8



## TOUCH-UP KIT

TUKIT



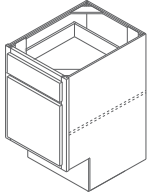
**CONTRACTOR'S  
CHOICE®**

# UNIVERSAL DESIGN CABINETS

## BASE & TALL CABINETS

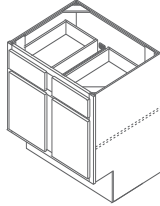
See Contractor's Choice Price/Spec Guide for complete details

### SINGLE DOOR 32½" High, 23¾" Deep



B12UD  
B15UD  
B18UD  
B21UD

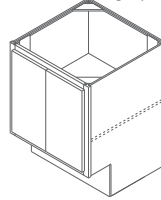
### DOUBLE DOOR 32½" High, 23¾" Deep



B24DDUD\* B42UD  
B27UD\* B45UD  
B30UD B48UD  
B33UD  
B36UD  
B39UD

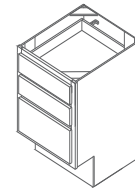
\* Single Drawer

### FULL HEIGHT DOOR 32½" High 23¾" Deep



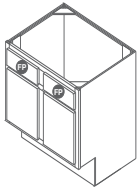
B24DDFHU  
B30FHU  
B33FHU  
B36FHU

### THREE DRAWER 32½" High, 23¾" Deep



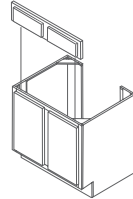
DB12UD  
DB15UD  
DB18UD  
DB24UD

### SINK/RANGE 32½" High, 23¾" Deep



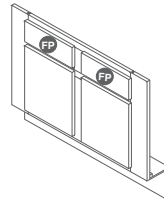
SB30UD  
SB36UD

### REMOVABLE SINK BASE WITH FRONT PANEL 32½" High



RSB30UD  
RSB36UD

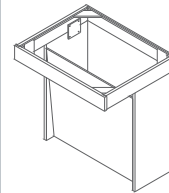
### SINK FRONTS 32½" High



SF30UD\*  
SF36UD

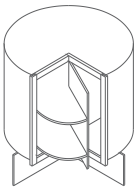
\* Single Door/  
Drawer Front

### SINK BASE UNIT WITH FRONT PANEL 32½" High 23¾" Deep



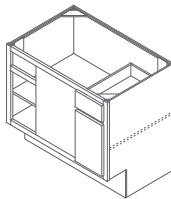
SU30UD  
SU36UD

### SQUARE CORNER ROTO 32½" High



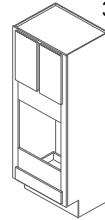
SCR36UD

### SQUARE CORNER 32½" High 23¾" Deep



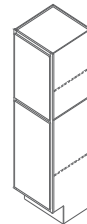
SCB36UD  
SCB42UD  
SCB45UD

### OVEN CABINET 84", 90" & 96" High 33" Wide 23 3/4" Deep



OC33UD  
OC3390UD  
OC3396UD

### UTILITY CABINET 84", 90" & 96" High 23 3/4" Deep



U18UD  
U1890UD  
U1896UD



**CONTRACTOR'S  
CHOICE®**



Contractor's Choice is your dedicated partner in providing and delivering timeless cabinetry solutions with lasting quality for your multi-family living complex.

MasterBrand Cabinets, Inc.  
Printed in USA

Product photography and illustrations have been reproduced as accurately as printing technologies permit. To ensure highest satisfaction, we strongly suggest you view an actual sample for best color wood grain and finish representation.

CCFLLINE0809

2009-08/??/?/##M